

South Cambridgeshire Hall  
Cambourne Business Park  
Cambourne  
Cambridge  
CB23 6EA

t: 03450 450 500

f: 01954 713149

**[www.scambs.gov.uk](http://www.scambs.gov.uk)**



**South  
Cambridgeshire**  
District Council

**Plans and Drawings pack – Planning Committee, 8 September  
2021**

**Pages  
1 - 16**

This page is left blank intentionally.

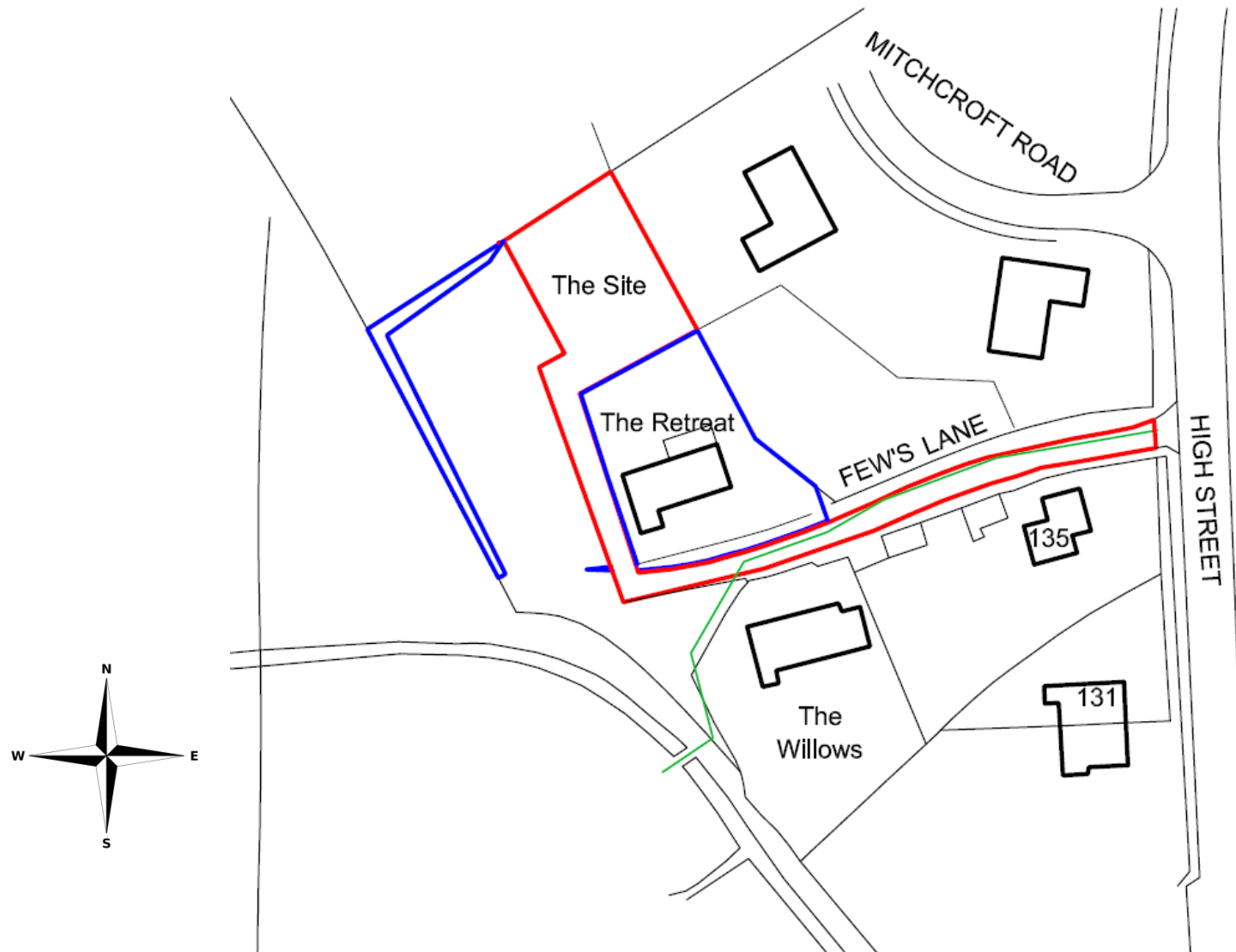
# Planning Committee



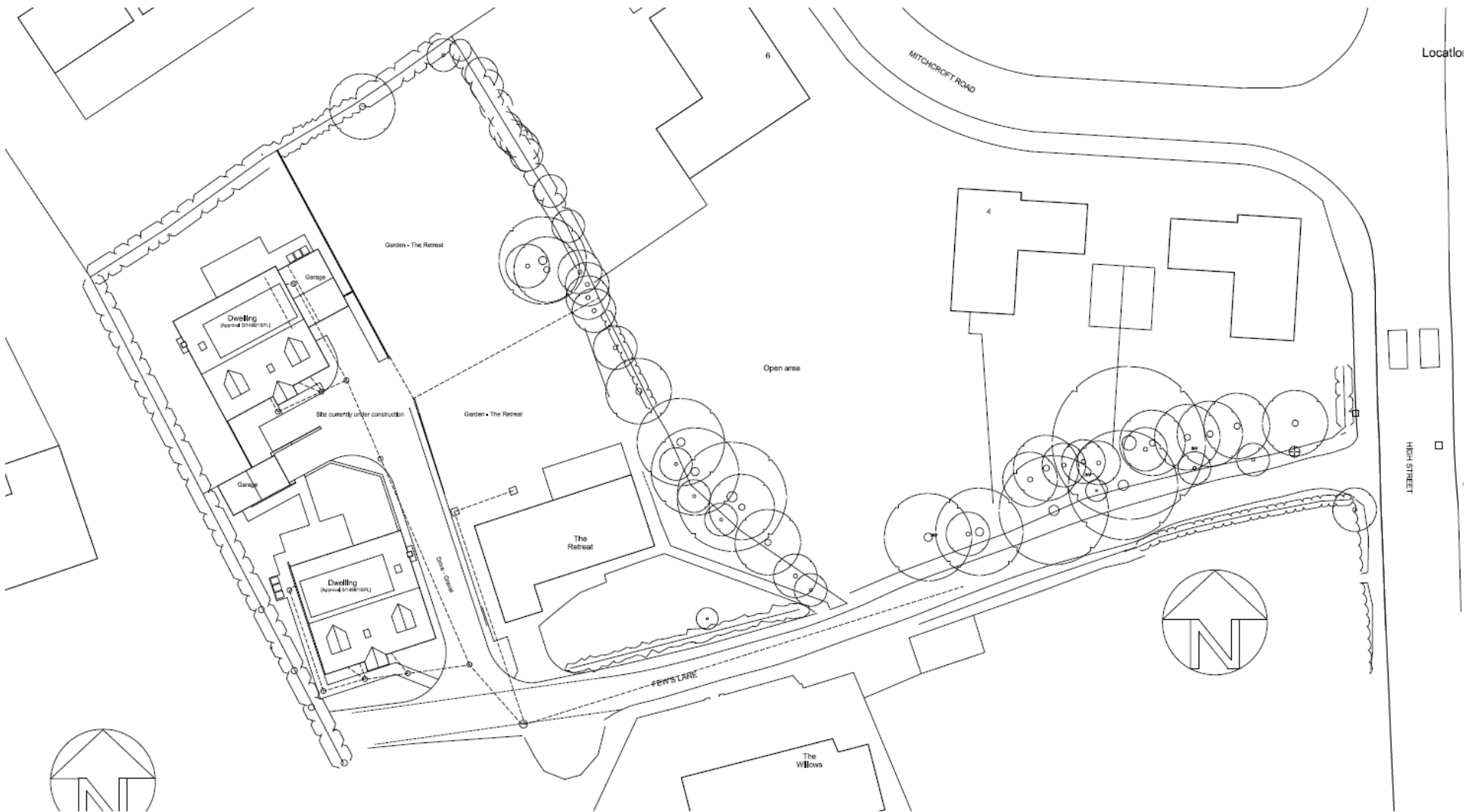
# *20/05101/FUL - Fews Lane, Longstanton*

## Site Location Plan

Page 2

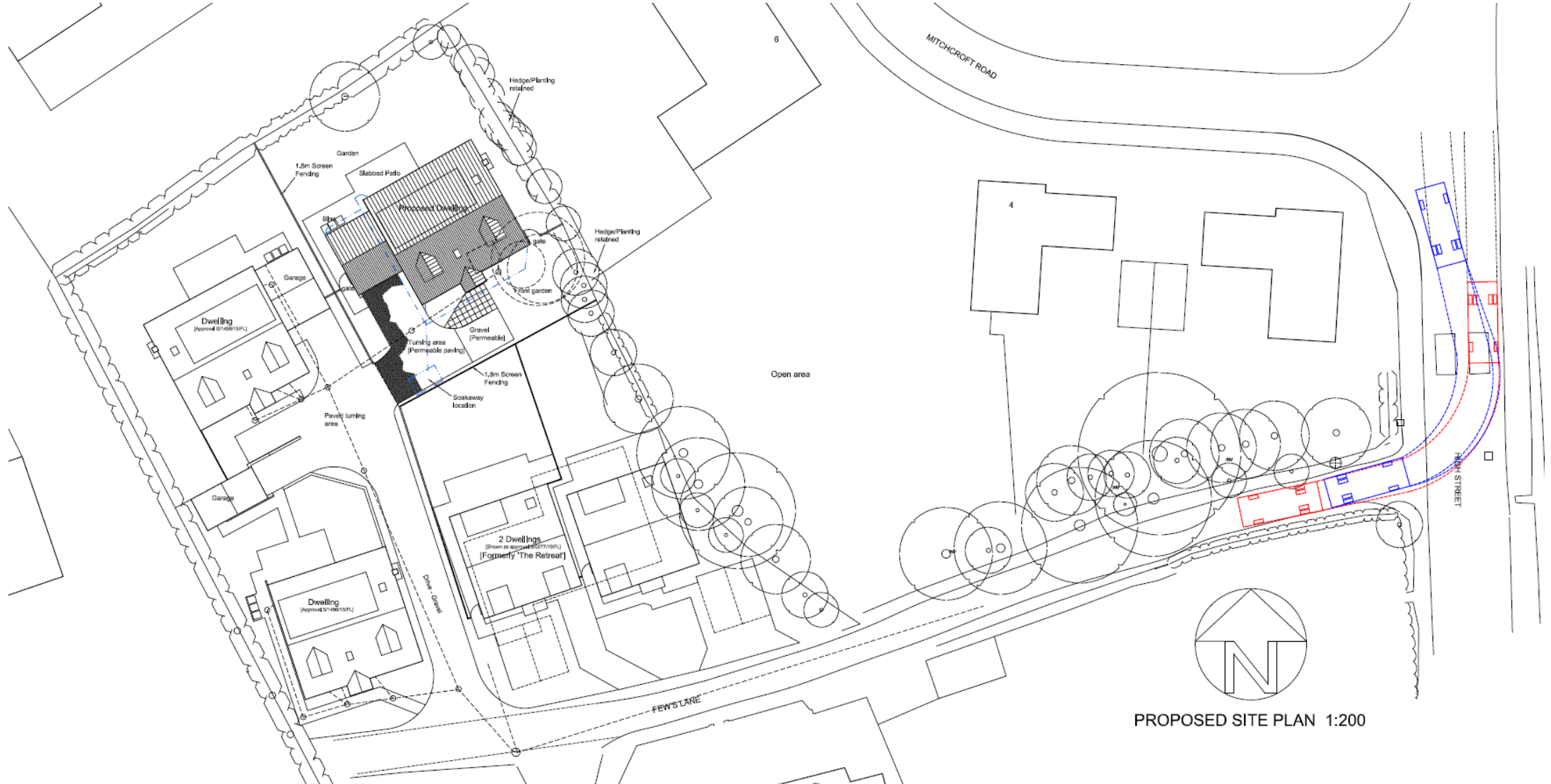


# Existing site plan



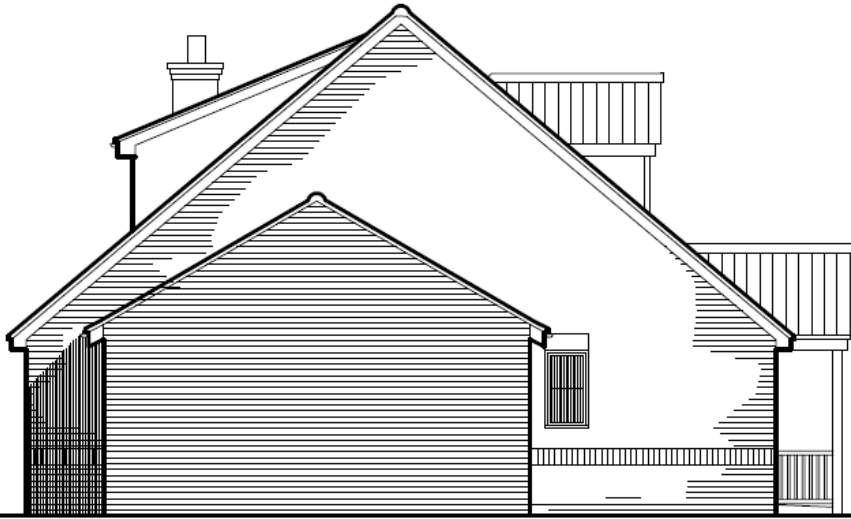
# Proposed site plan

Page 4



# Proposed elevations

Page 5

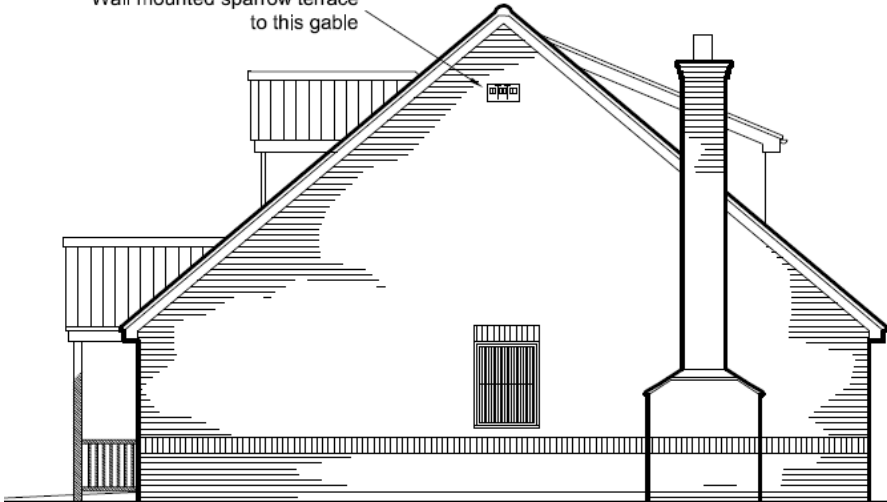


Side Elevation

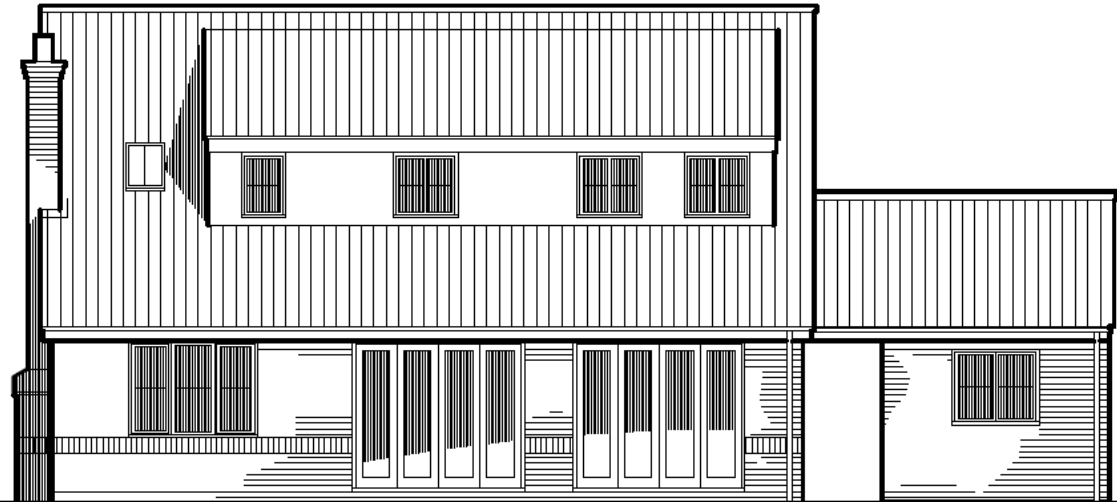


Front Elevation 1:100

Wall mounted sparrow terrace  
to this gable

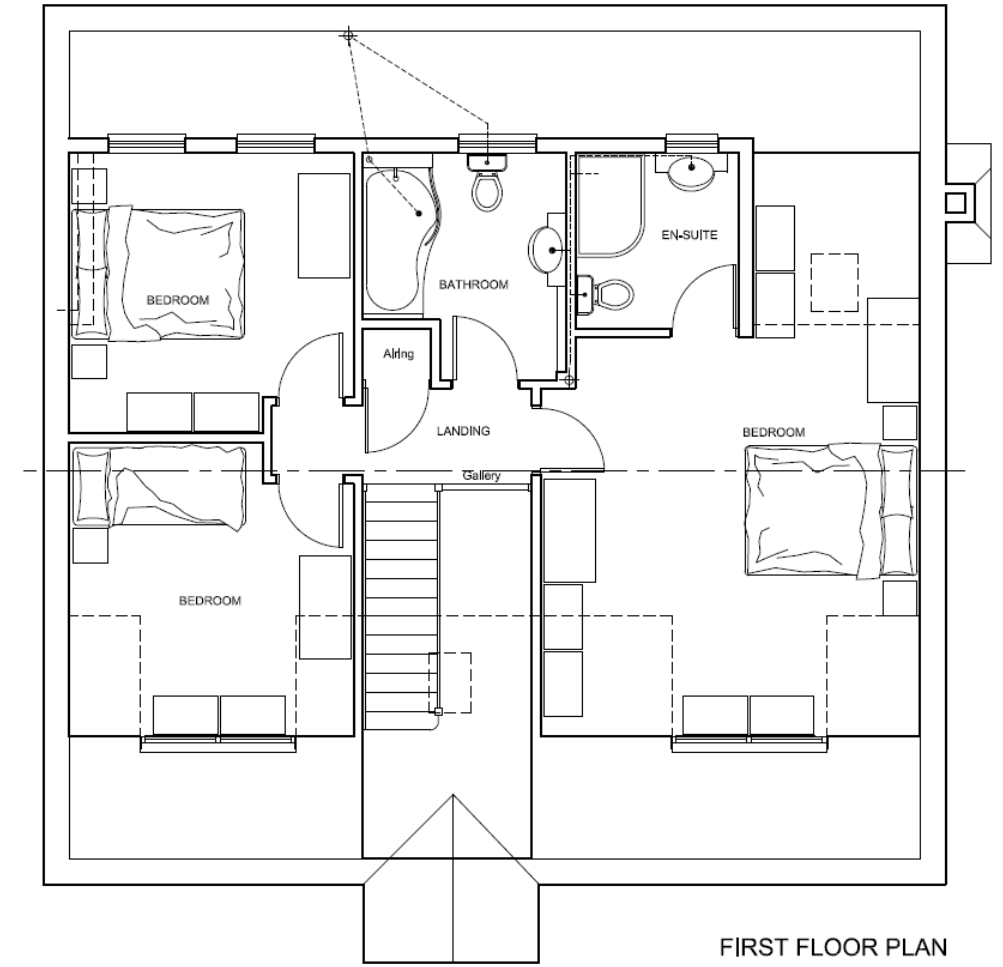
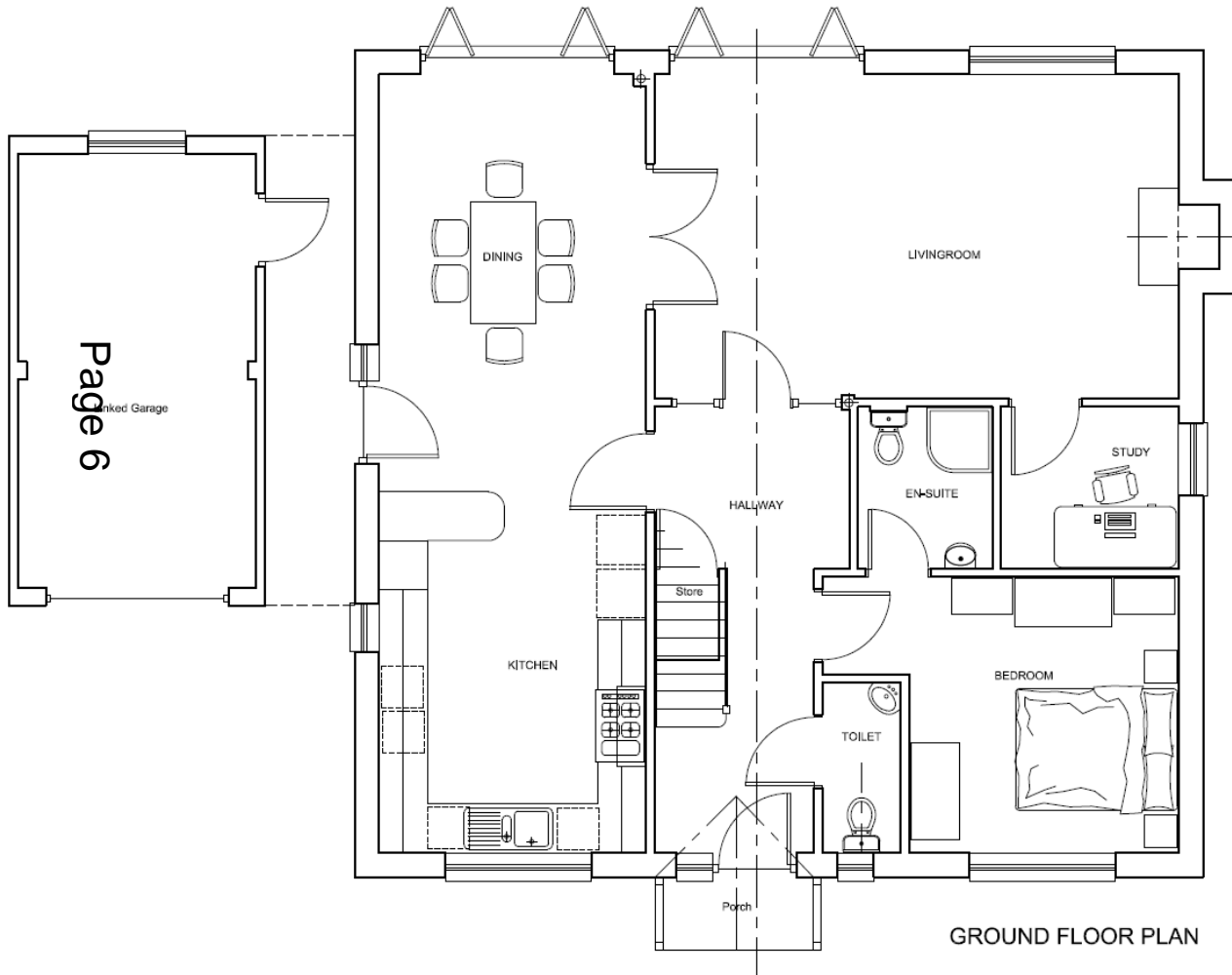


Side Elevation [West]



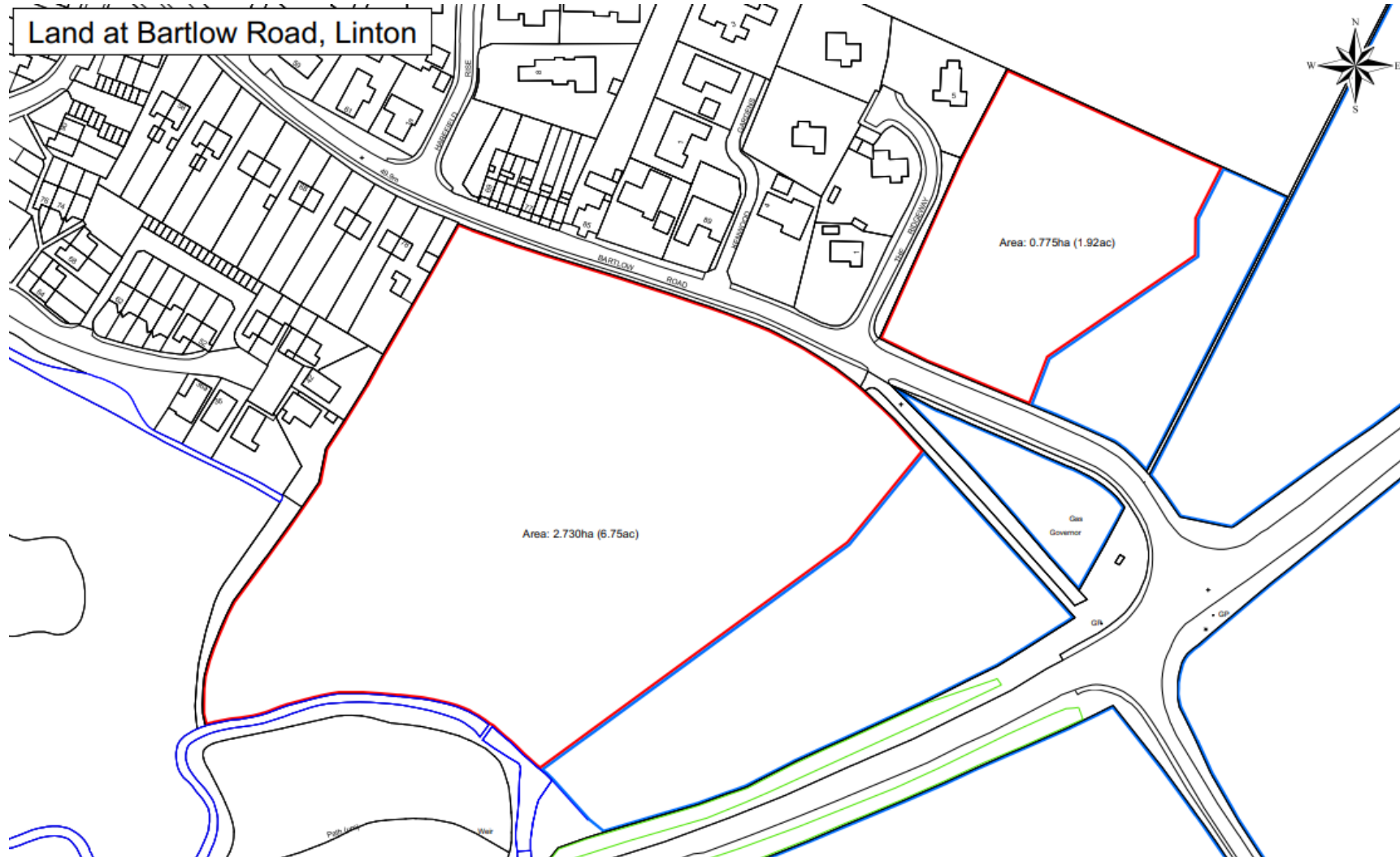
Rear Elevation

# Proposed ground & first floor plan





## Page 7



## Page 8



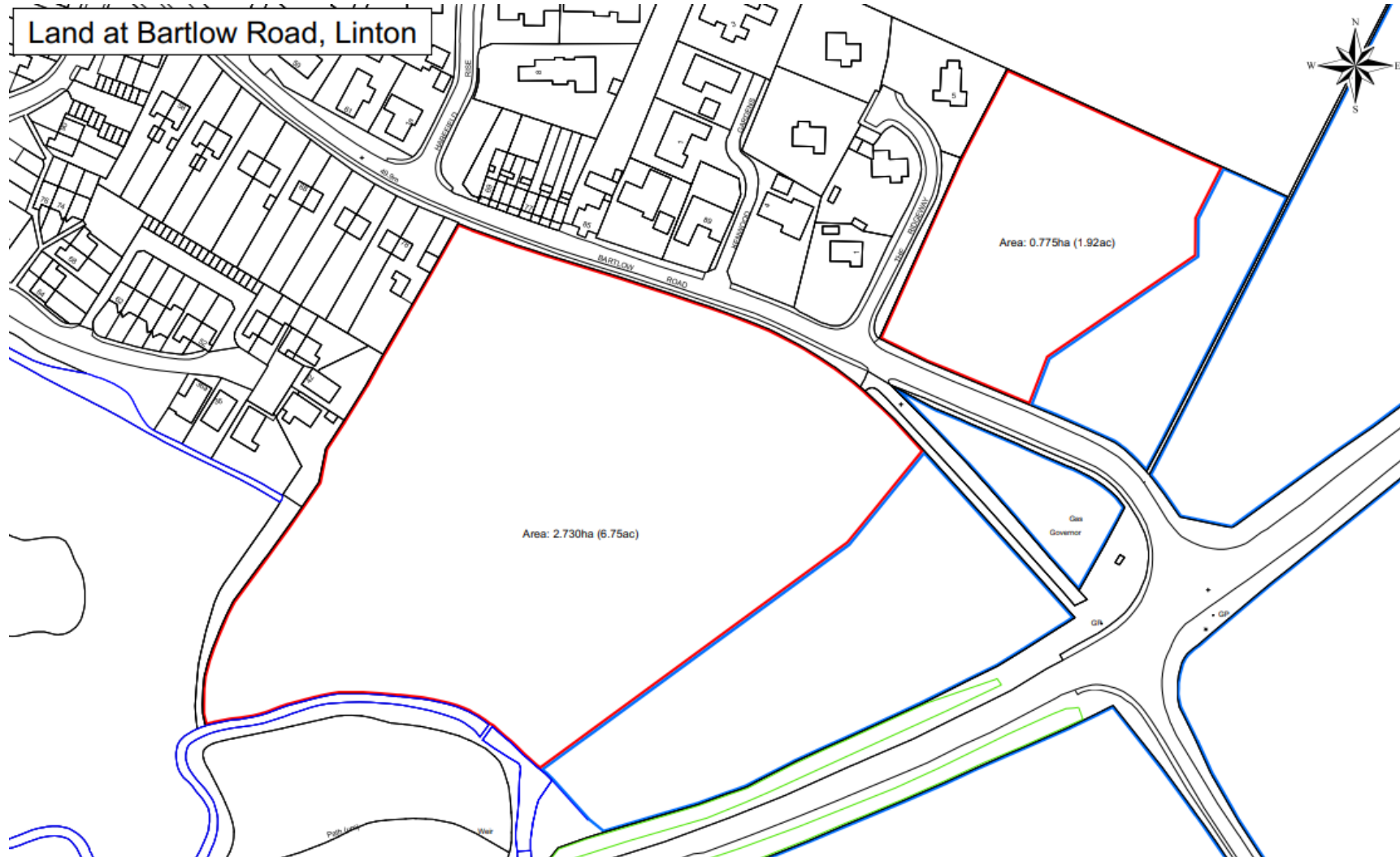


Southern Site Drainage Layout





## Page 10

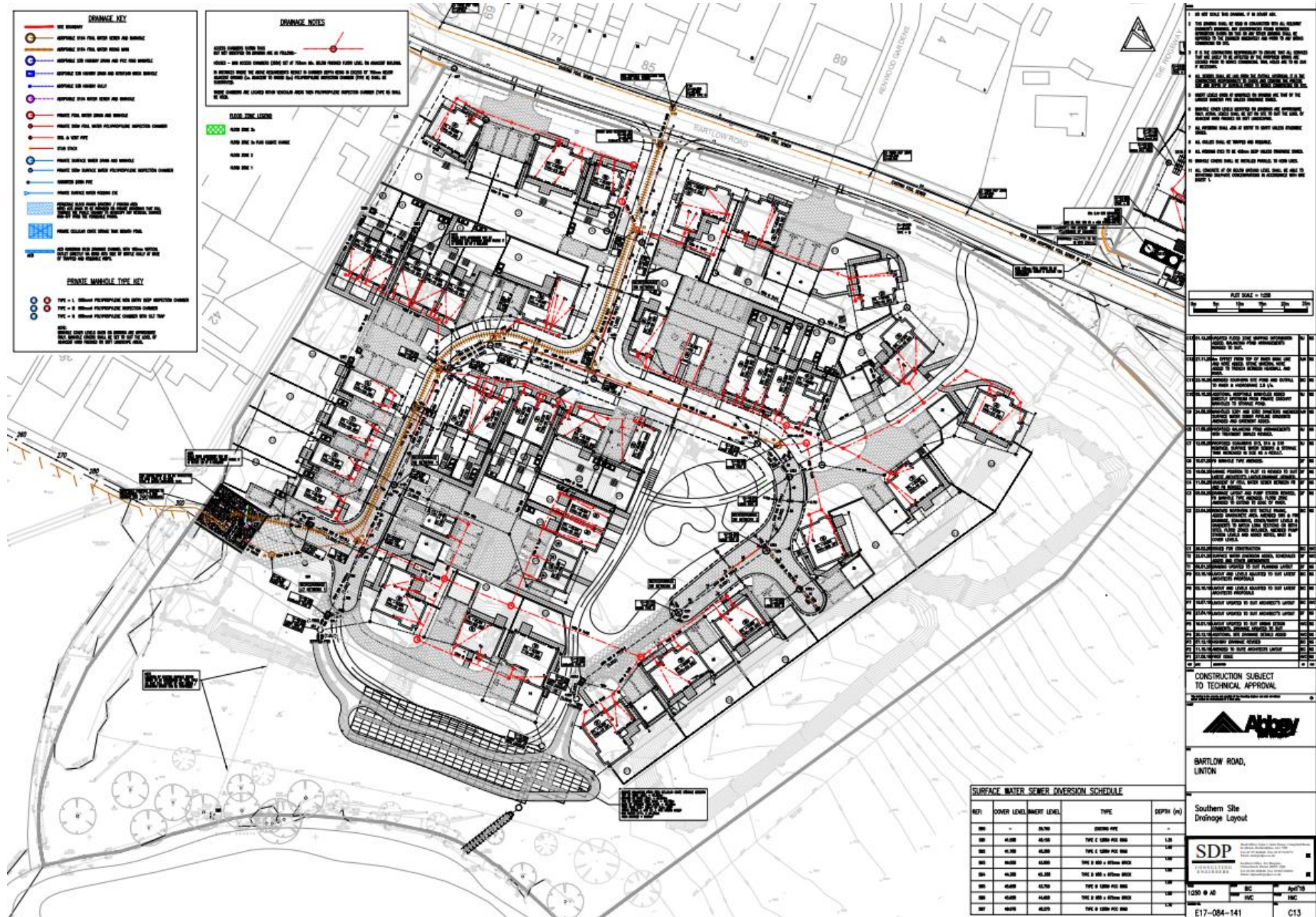


## Page 11



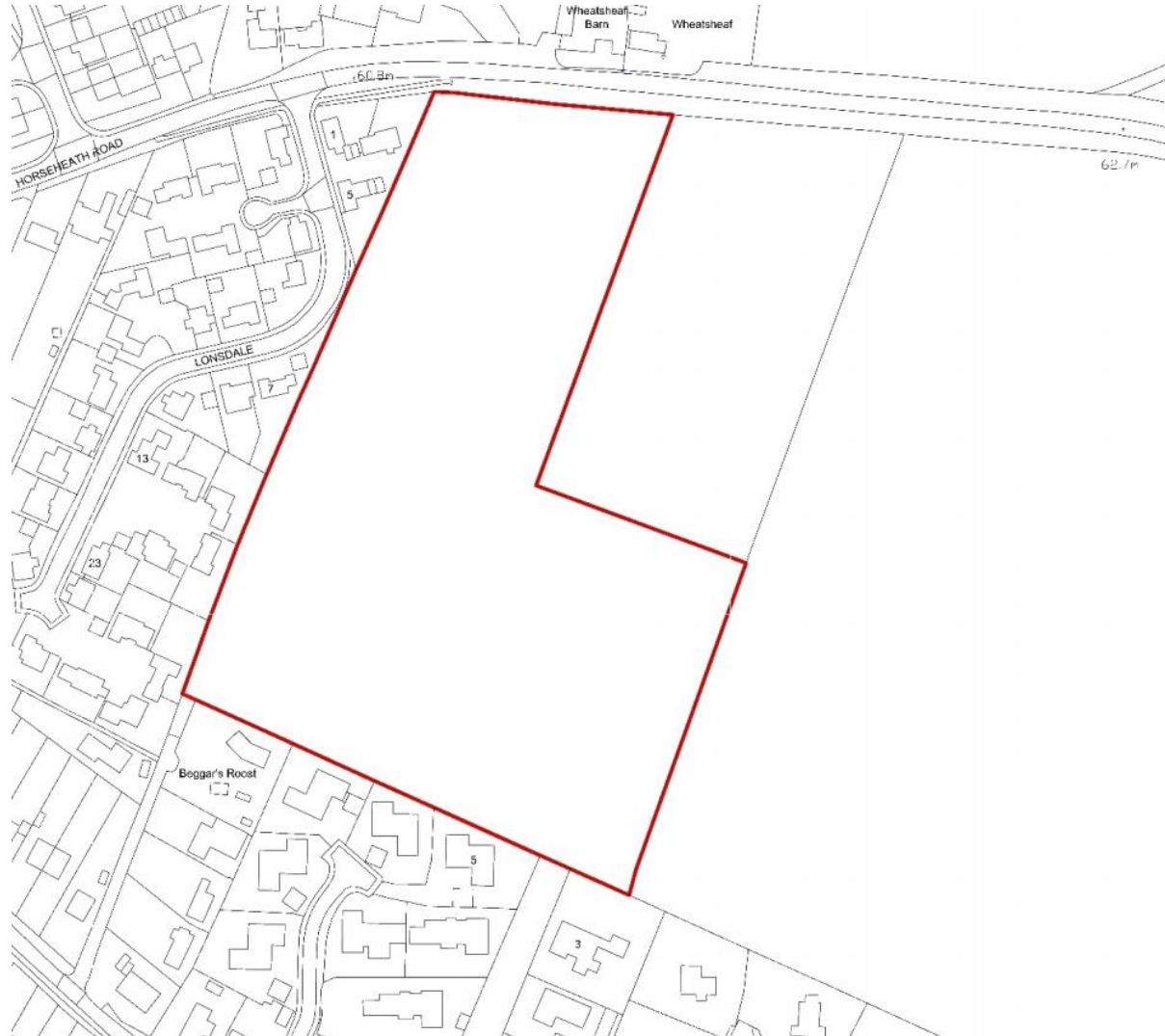


## Page 12



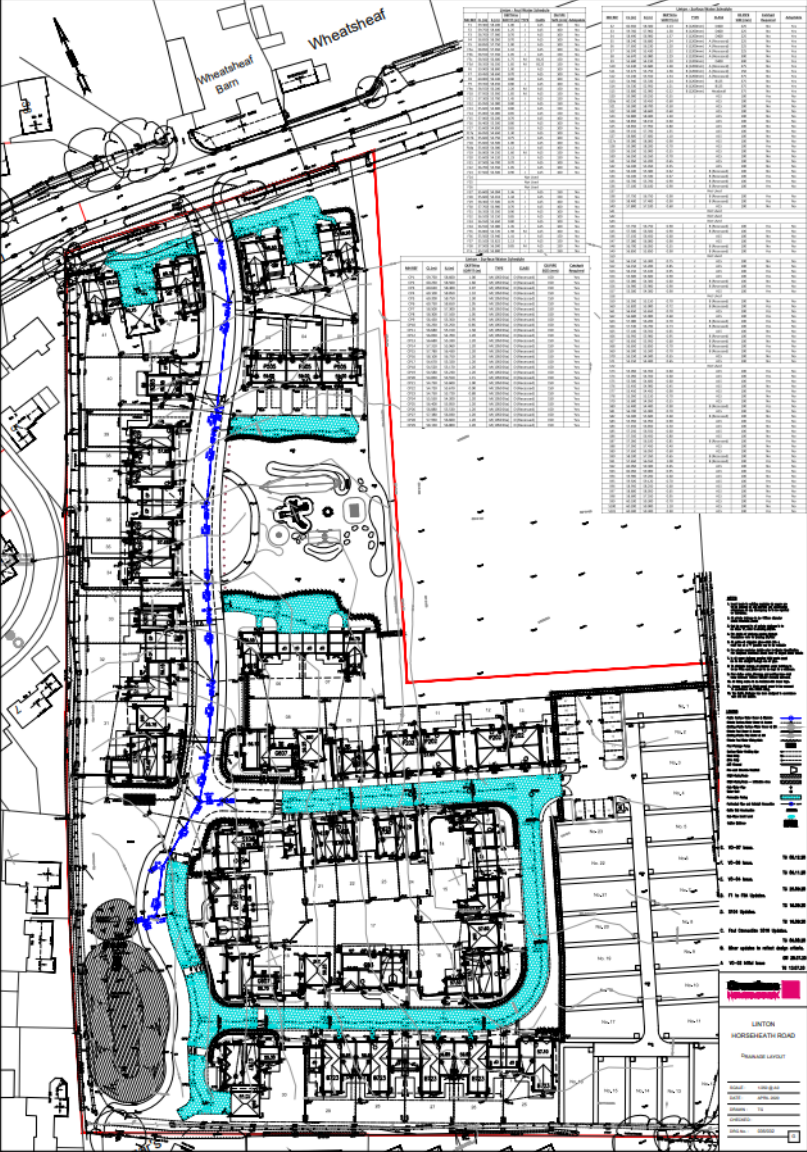
# *S/2553/16/CONDH - Horseheath Road, Linton*

## Site Location Plan



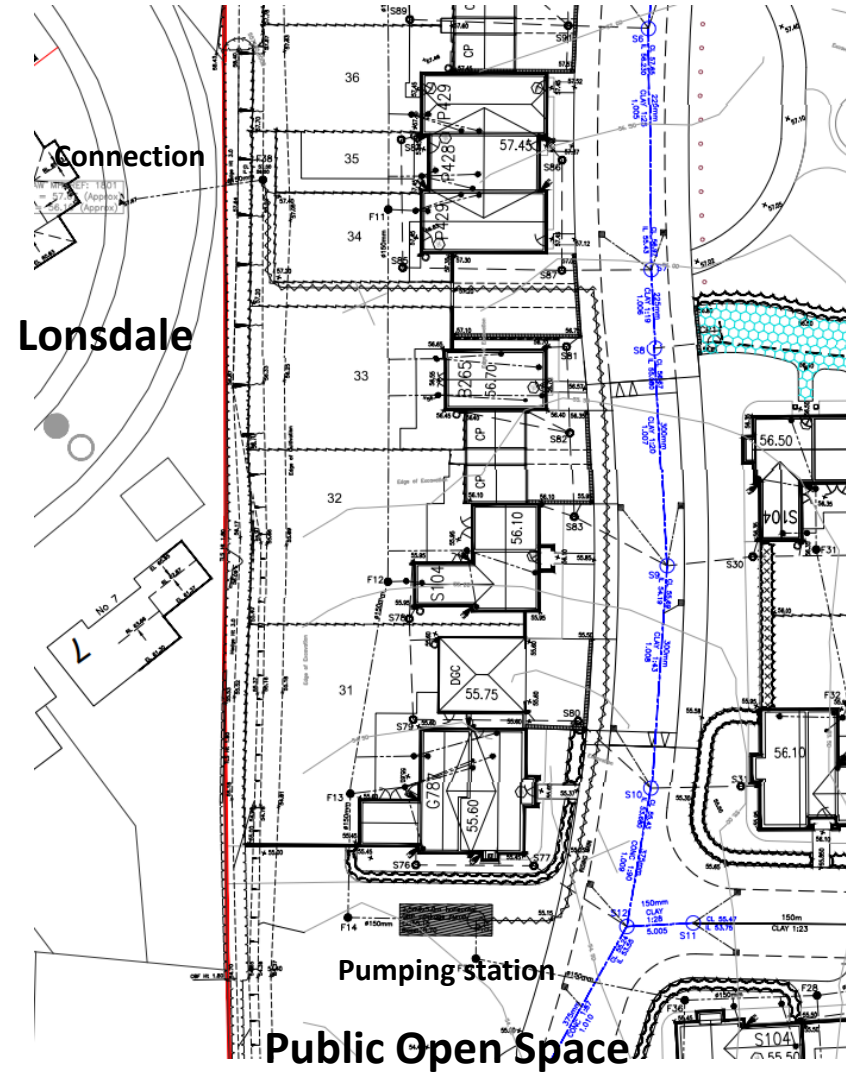


# Foul Drainage Layout





# Detailed Section of Layout



# Pump Detail

